

" El Palo "



Los Tinos Rosario S.A.
SANTAFE DE BOGOTA
BUCARAMANGA

Saxo F#p

(X 4 VECES)

(X 8 VECES)

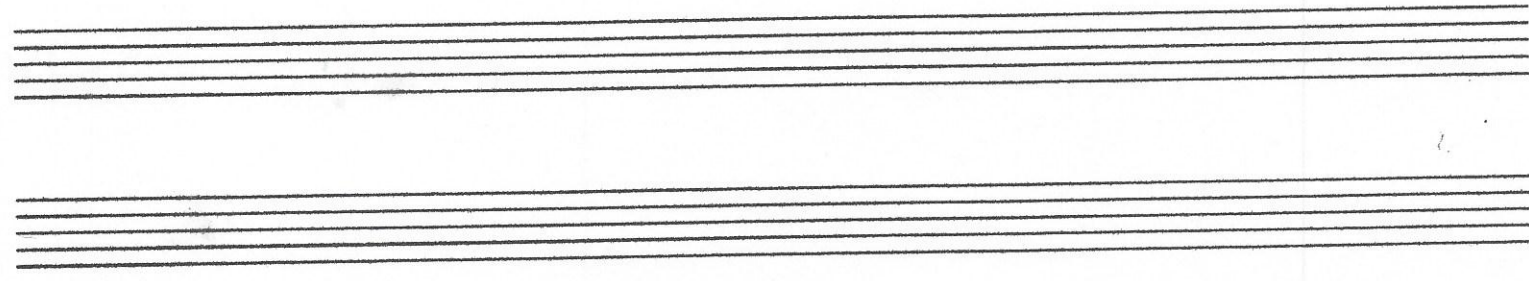
FIN (X 4 VECES)

(X 4 VECES) 16 (X 4 VECES)

(X 4 VECES)

(X 4 VECES)

A.T. y SIGUE || D.C. y FIN || OSCAR CALDERON ||



"El Palo"



ortizo s.a.
SANTAFE DE BOGOTA
BUCARAMANGA

ANOS ROSARIO

SAXO Bp

(X 4 VECES)

(X 8 VECES)

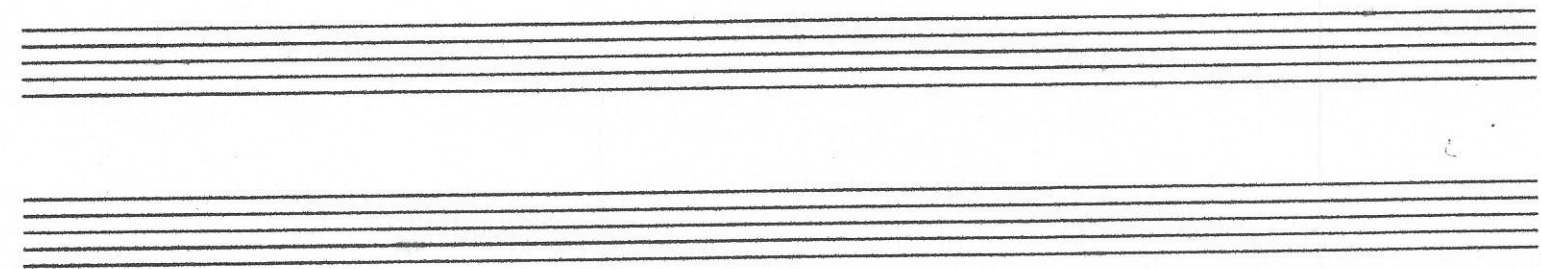
FIN (X 4 V.)

(X 4 VECES)

(X 4 VECES)

(X 4 VECES)

Al. y. y. OSCAR CALDÓN



" El Pato "



ortizo s.a.
SANTAFE DE BOGOTA
BUCARAMANGA

Hijos ROZARIO

TROMPETA 1^a
Bb

Musical staff with treble clef, key signature of one sharp (F#), and 16-measure rest. Includes a double bar line with repeat dots and a 'CANCION' label.

Musical staff with treble clef, key signature of one sharp, and notes with stems.

Musical staff with treble clef, key signature of one sharp, and notes with stems. Includes a 'FIN' label and a large '32' measure rest.

Musical staff with four 16-measure rests. Labels below are 'CORO', 'VOZ', 'CORO', and 'VOZ'.

Musical staff with four 16-measure rests. Labels below are 'CORO' and 'MAMBO'.

Musical staff with notes and stems, including a double bar line with repeat dots and a 'FIN' label.

Musical staff with notes and stems, including a double bar line with repeat dots and a 'FIN' label. Labels include 'SIGUE', 'CORO', 'D.C', and 'OSCAR CALDON'.

Four empty musical staves for additional notation.

"El Palo"



ortizo s.a.
SANTAFE DE BOGOTA
BUCARAMANGA

HAYOS ROSARIO

TROMPETA 2A

BP

16 SAXOS

32 VOZ

16 COBO | 16 VOZ | 16 COBO | 16 VOZ

16 COBO | 16 MANGO

Al. ~~...~~ y QUEDE

16 COBO | D.C. y FIN | OSCAR CALDERON